

Healthy Choice[™]
HBC60

CORDLESS STICK BLENDER SET

WITH 3 ADJUSTABLE ANGLES AND 21 ADJUSTABLE SPEEDS



Model: HBC60
Batch: PR4290

This appliance is intended for household use only.
Please read and retain these instructions for future reference.

The illustrations used in this manual are to illustrate the operation method and structure of the product. Where there is a small difference between the physical item and the illustrations, please take the physical as the standard.

Product description:

Preparing soups and sauces at home can be time consuming with the struggles of transferring the recipes to your blender or stand mixer, then back into the pot to continue simmering. The extra steps can be off-putting, but what if there was a simple solution to avoid those extra steps? Our Cordless Stick Blender Set is easy to use, easy to clean, and dodges all those extra steps.

The Cordless Stick Blender Set is an affordable option to traditional blenders and stand mixers. Its compact size means easy cleaning and easy storage, without taking up all of your benchtop space. These 'hand blenders' are simple to use- attach the immersion blender or whisk to the power handle, place directly into your pot, pitcher or bowl containing your ingredients, then use the one touch control system to continuously blend your recipe to your liking. Alternatively, tap the ON button to pulse your ingredients. The comfortable grip handle is light and ergonomic for sturdy grip, allowing you full control of the stick blender while being gentle on the hands. Mix the entire contents of the bowl with ease, as you control the movement yourself.

Blending, mincing, chopping, whipping, pureeing and frothing are all made simple with the Cordless Stick Blender Set. The stainless-steel shafts and blades are fast, efficient and powerful enough to crush ice. The included 700mL chopper bowl, 700mL beaker, immersion blender and whisk are all dishwasher safe, making clean-up quick compared to other mixers.

With 3 adjustable angles from 90°, 135°, 180° and 21 multiple speed variations on the top dial, this stick blender can execute any mix job. The cordless design allows for a quick charge time and long run time, so you mix smarter, not harder. With USB charging, a powerful 7.4V 2000mah lithium-ion battery and an LED charging light as well as a low battery indicator light, this stick blender truly takes culinary to the next level.

Perfect for caravans on family holiday or crushing biscuits for a dessert base at home, this compact and powerful stick blender is a must-have companion. Treat yourself to convenience and satisfaction in the kitchen with our Cordless Stick Blender Set.

Features:

- Cordless Stick Blender Set,
- 3 adjustable angles,
- Comfortable grip handle,
- Light and ergonomic for sturdy grip,
- Detachable stainless-steel shaft,
- Easy to use one-touch control large buttons,
- 21 multiple speed variations on top dial,
- Perfect for mixing in pots, pitchers, bowls,
- Blends, minces, chops, whips, purees, froths,
- Easy to clean
- USB charging
- 7.4V 2000mah lithium-ion battery
- LED charging light,
- Low battery indicator light
- Safety lock,
- 180W motor, overheat protection
- Adjustable Angles: 90°, 135°, 180°
- Charging Time: 2-3 hours
- Colour: Black
- Measurements: 7cm x 7cm x 47cm
- Weight: 1.28kgs
- Accessories: Cordless stick (immersion) blender, whisk, 700ml chopper bowl, 700ml beaker, USB charging cable

Before using the hand blender for the first time:

Carefully unpack the appliance and remove all packaging materials, check the contents to ensure that all the parts and accessories are present and are in good condition.

Safety and warnings:

WARNING do not touch the blades; they are very sharp. Do not have the appliance plugged into a mains supply when cleaning or fitting attachments. Wash all the attachments in warm soapy water, rinse and dry thoroughly. Wipe the blades carefully with a damp cloth, then allow to fully dry.

The power handle can only be wiped with a damp cloth;

DO NOT IMMERSE THE POWER HANDLE IN WATER.

Important Precautions:

When using electrical appliances, basic precautions need to be followed at all times to reduce the risk of fire, electrical shock and injury.

- Use this electrical appliance as described in this manual, any other use is not recommended by the manufacturer and could have a detrimental effect on the durability of the appliance and or the safety of the user.
- This appliance is not intended for use by person (including children) with reduced physical, sensory or mental capability has or lack of experience and knowledge, unless they have been given supervision or instruction concerning use of the appliance by a person responsible for their safety.
- Children should be supervised to ensure that they do not touch or play with the appliance.
- Do not use outdoors.

Important Safeguards:

- The appliance must not be used in potentially dangerous locations such as flammable, explosive, chemical-laden or wet atmospheres where petrol or flammable liquids are used or stored.
- This appliance is only intended to be used in household and similar applications such as:
 - staff kitchen areas in shops, offices, and other work environments
 - farm houses
 - by clients in hotels, motels, bed and breakfast and other residential environments
- Do not use in a bathroom or in an area that could allow it to get wet.
- Never operate the appliance with a damaged power lead or plug or after the appliance malfunction, or the control unit is damaged in any way.
- There are no internally serviceable parts, do not attempt to disassemble.
- Never insert or allow fingers or foreign objects to enter any ventilation or exhaust openings as it may cause an electrical shock or fire.
- The blades are very sharp, take care when cleaning and disassembling the appliance.
- With heavy mixtures, do not use the hand blender for longer than 50 seconds in any four minutes period.
- When operating, do not put hands or sharp objects near the blending blades.
- Do not submerge the power handle in water during cleaning.
- Do not switch on the appliance without it in a suitable container.

Chopper attachment:

- Do not touch the sharp blades.
- Remove the chopper blade before emptying the bowl.
- Never remove the cover until the blade has completely stopped.

Blender attachment:

- Do not touch the blade when the unit is in operation.
- Do not touch the sharp blades.
- Take care to keep hair, jewelry, clothing etc. from becoming tangled in the attachment.

Whisk attachment:

- Do not touch the sharp blades.
- Take care to keep hair, jewelry clothing etc. from becoming tangled in the attachment.

Re-Charging the battery:

There is a USB charging cord with this product.

Connect the USB end of the charging cord into a USB power adaptor (not included) and the other end into the USB charging socket on the hand mixer.

Ensure the USB power adaptor is plugged into a wall socket with the power point turned on.

When there is no power, it will take about 3 hours to fully charge.

During the charging process, the power indicator lights will be displayed in a moving pattern.

When the power is full, the power indicator will be illuminated and not moving.

Under full power, it can work for about 1 hour in normal use

(non-heavy load, heavy load means there is solid substances, such as when stirring fruit blocks).

During use, when the power is very low, the power indicator only flashes to indicate the need for charging.

Battery information:

Battery Voltage: 7.4 V Lithium-Ion (Li-ion) / 2000m Ah

Power: DC 7.4V 180W

Charger Input: 5V / 1A~2A, USB power adaptor (not included)

Charging time: 2-3 hours with 5V 2A USB power adaptor (not included)

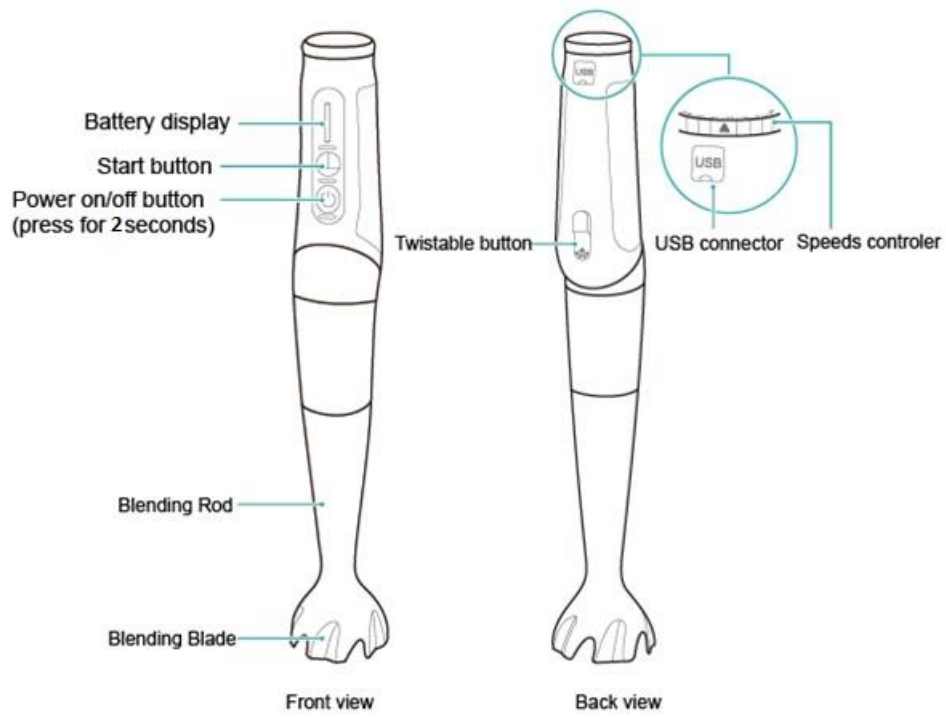
Total battery time after charge: up to 1 hour

Disposal:

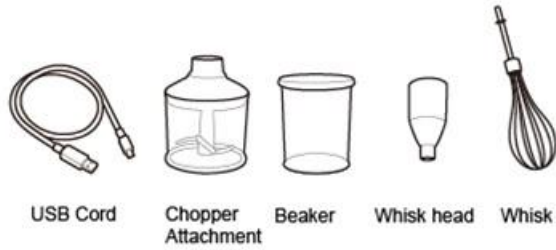
Always dispose of your battery pack according to federal, state, and local regulations.

Contact a recycling agency in your area for recycling locations. Even discharged battery packs contain some energy. Before disposing, use electrical tape to cover the terminals to prevent the battery pack from shorting, which could cause a fire or explosion.

Parts and features:



Parts and Accessories



Operating the hand blender:



Press the power on/off button for 2 seconds, the battery display will show the Battery Remaining Capacity. (If only one grid's light on and blinking, this is a reminder that you need to charge the machine)

Insert the attachments into the motor body and twist to lock unit it clicks. Press the power on/off button for 2 seconds, the hand blender is ready to use.

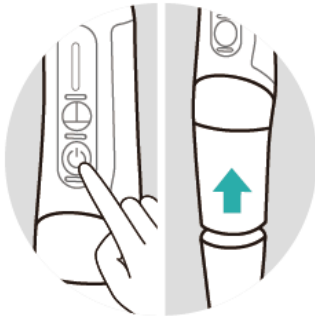
Keep pressing the START button, the hand blender will start working. (If the button is not pressed, the hand blender will stop working.)

- After pressing the power on/off button for 2 seconds, if there is no operation of the hand blender for over 10 seconds, the hand blender will Power off automatically. If you need to use it, press the power on/off button for 2 seconds and then press START button.
- If the hand blender is overloaded, the overload protection program will be started automatically. The machine will stop working. All the battery display lights will be on and blinking for 10 seconds.

Reduce the content of ingredients to be blended. After the battery display lights stop blinking, the machine can be used again.

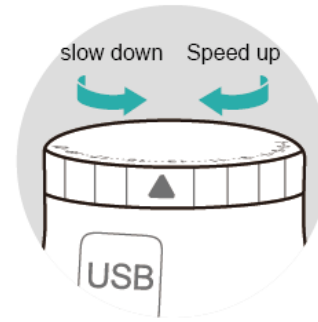
- If the hand blender is seriously overloaded, the machine will stop working, the battery display light will not blink. This is the battery enters the protection status.

It is necessary to charge the product for few seconds until the battery display light is on again. Then reduce the content of the ingredients to be blended and the machine can be used again.



Removing the attachments

Ensure the hand blender is powered off, then remove the attachments.

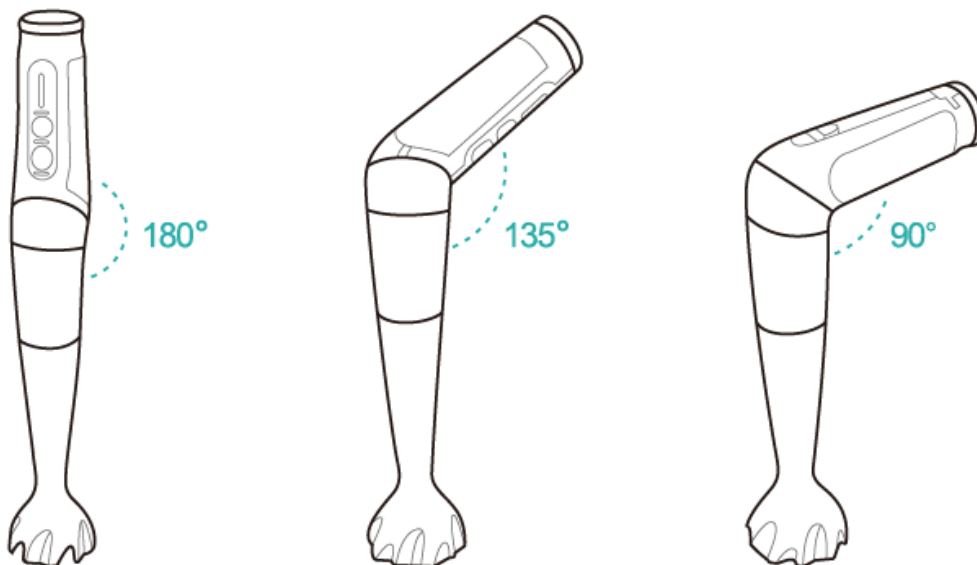


Speeds control

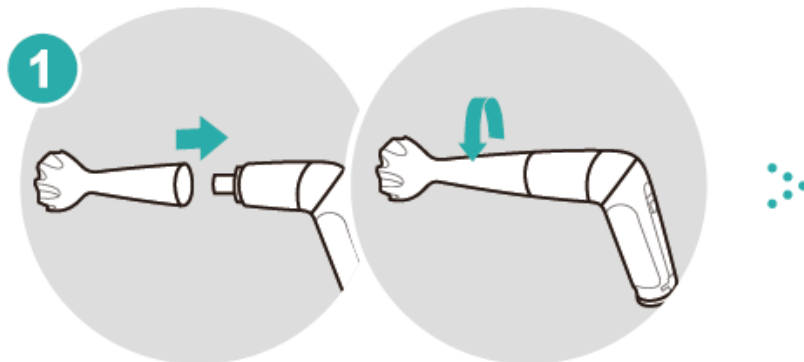
When using the hand blender, twist the speed control to adjust the operating speeds. Twist by clockwise, speed up. Twist by anticlockwise, slow down. The Triangle is facing the real-time speed.

Adjusting the angle:

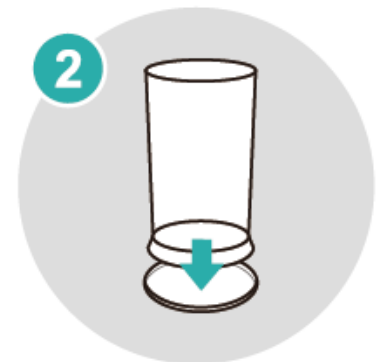
There are 3 positions for the Twistable Head, the positions are recommendations only, the attachments will work in any of the 3 positions. To change the position, press the Twisting Lock Button on the back of the Twistable Head and rotate the head to the desired position.



How to use the blending rod:



Insert the blender rod into the motor body and twist to lock until it clicks.



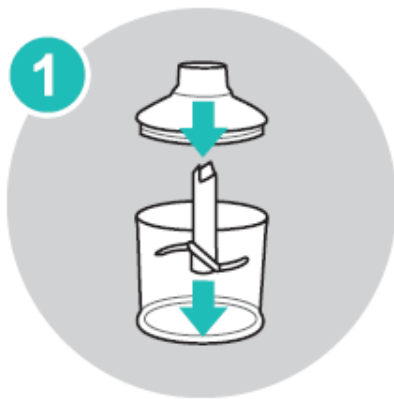
The beaker's cover can be non-slip base.



First, adjust the working Angle of the machine (180 ° or 90 °), pour the ingredients into the beaker, then put the stirring rod into the beaker, then press the power button for 2 seconds, and then press the start button to start the operation. When the hand blender is working, the mixing speed can be adjusted as needed.

Warning: To ensure the long life of your hand blender, do not continuously use it for more than 1 minute. Allow the motor to cool down for around 5-10 mins before next operation.

How to use the chopper:



Insert the chopper blade into the chopper bowl.
Add small food items to be chopped to the bowl.
Attach the chopper adapter to the chopper bowl. Place the adapter straight down.
Do not try to twist the adapter into place.



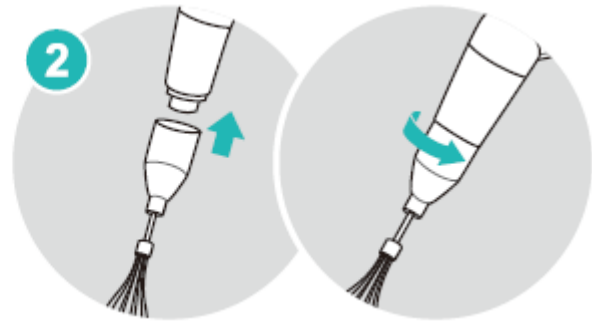
Align the chopper bowl with the motor body and press together.
Do not try to twist motor body into place.

Warning: To ensure the long life of your hand blender, do not continuously use it for more than 1 minute. Allow the motor to cool down for around 5-10mins before next operation.

How to use the whisk:



Insert the whisk to
whisk adaptor



Insert the whisk adaptor into the motor
body and twist to lock until it clicks.



The best working Angle of the whisk is 135
degrees.

While whipping the eggs, hold the bowl up
slightly with one hand, the hand blender
works best when it is angled.

Warning: To ensure the long life of your hand blender, do not continuously use it for more than 1 minute. Allow the motor to cool down for around 5-10mins before next operation.

Cleaning and maintenance:



Wipe the motor body with a damp cloth. Mild dish soap may be used, but do not use abrasive cleansers.



When handling food with high pigment content (such as carrots), the mixing cup may be stained and can be rinsed after wiping with vegetable oil.



Wash chopper adapter and whisk adapter by hand in hot, soapy water. Mild dish soap may be used, but do not use abrasive cleansers.

Parts which are dishwasher safe:

Chopper bowl

Beaker

Whisk only, not whisk adaptor

Specifications:

Battery Voltage: 7.4 V Lithium-Ion (Li-ion) / 2000m Ah

Power: DC 7.4V 180W

Charger Input: 5V / 1A~2A, USB power adaptor not included

Charging time: 2-3 hours with 5V 2A charger

Run time indications:

With a full charge using metal shaft: 8-12 cups of smoothie

With a full charge using egg whisk: 1h whipping.

With a full charge using chopper: 8-12 times chopping.

LENOXX

www.lenoxx.com.au

 1300 666 848

 LenoxxElectronics

 LenoxxElectronics

 @LenoxxAustralia